

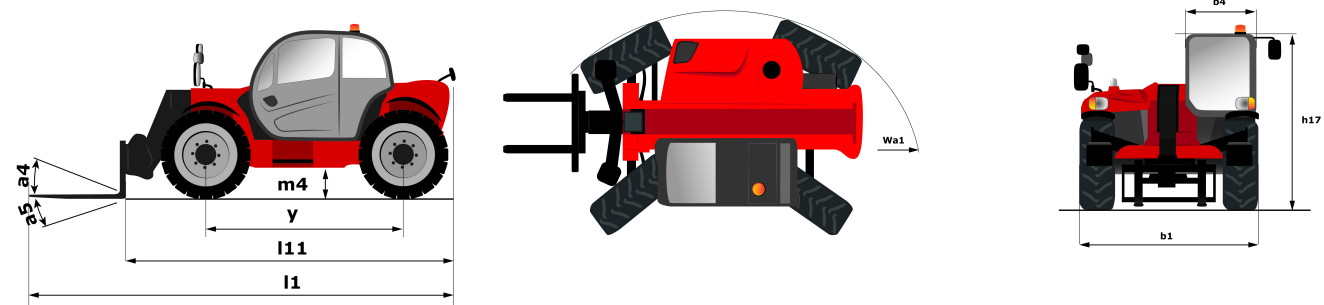
Technical sheet :

MT 733 EASY

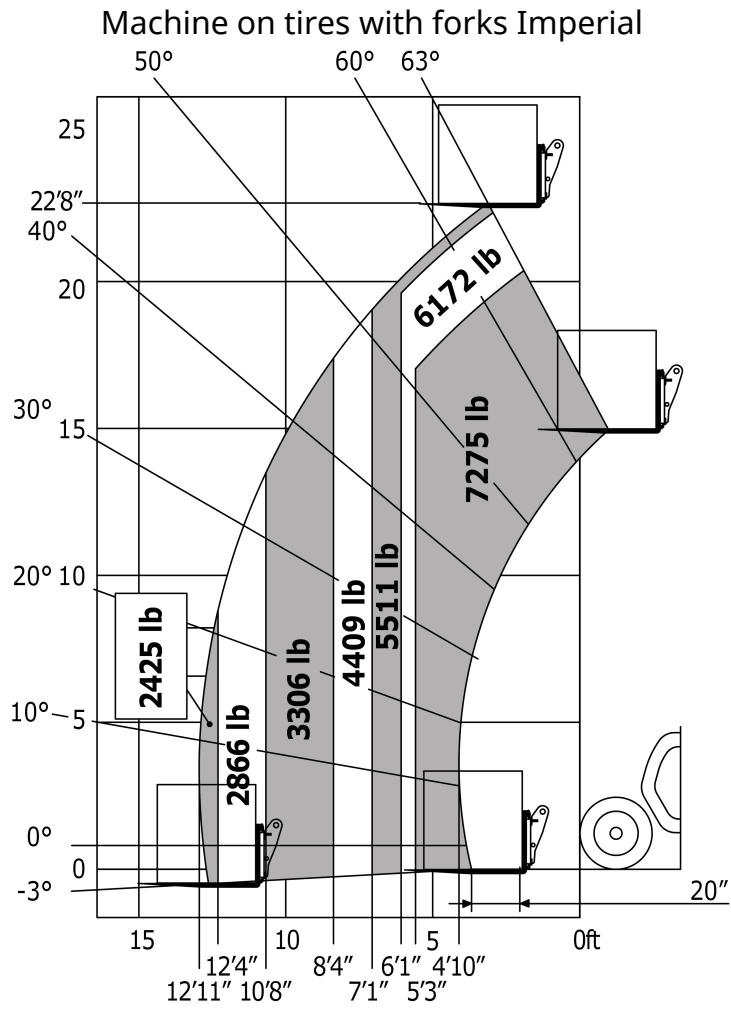


Capacities		Imperial
Max. capacity	Q	7275 lbs
Max. lifting height	h3	22 ft 8 in
Max. Reach	l4	12 ft 10 in
Breakout force with bucket		5770 daN
Weight and dimensions		
Overall length to carriage	l11	15 ft 7 in
Overall width	b1	7 ft 8 in
Overall height	h17	7 ft 7 in
Wheelbase	y	0.111 in
Ground clearance	m4	1 ft 6 in
Overall cab width	b4	2 ft 11 in
Tilt-up angle	a4	12 °
Tilt-down angle	a5	114 °
External turning radius (over tyres)	Wa1	12 ft 6 in
Unladen weight (with forks)		14771 lbs
Tyres type		Inflatable
Standard tyres		Alliance 400/80 - 24 - 162A8
Forks length / width / section	l / e / s	47.244 in x 4.921 in x 1.772 in
Performances		
Lifting		8.3 s
Lowering		6 s
Extension		7.3 s
Retraction		4.5 s
Crowd		3.4 s
Dump		2.8 s
Engine		
Engine brand		Deutz
Engine norm		Stage 5 / Tier IV Final
Engine model		TD 3.6 L
Number of cylinders / Capacity of cylinders		4 - 220.97 in ³
I.C. Engine power rating - Power (kW)		75 Hp / 55.4 kW
Max. torque / Engine rotation		340 Nm/m @ 1600 tr/min
Drawbar pull (Laden)		8360 daN
Transmission		
Transmission type		Torque Converter
Number of gears (forward / reverse)		4 / 4
Max. travel speed (may vary according to applicable regulations)		15.5 mph
Parking brake		Manual
Service brake		Oil-immersed multi-discs braking on front & rear axles
Axle Manufacturer		Dana
Hydraulics		
Hydraulic pump type		Gear pump
Hydraulic flow / Pressure		92.7 l/min / 18 PSI
Tank capacities		
Engine oil		2.20 gal
Hydraulic oil		28.16 gal
Fuel tank		26.40 gal
Noise and vibration		
Noise at driving position (LpA)		79 dB(A)
Noise to environment (LwA)		104 dB(A)
Vibration on hands/arms		< 8.2 ft/s
Miscellaneous		
Steering wheels (front / rear)		2 / 2
Drive wheels (front / rear)		2 / 2
Safety / Safety cab homologation		Standard EN 15000 / Cab ROPS - FOPS Level 2
Controls		JSM

Dimensional drawing



Load chart



STAR EQUIPMENT, LTD.

1401 2nd Avenue, Des Moines, IA 50314
(515) 283-2215 (800) 369-2215
2950 6th St. SW, Cedar Rapids, IA 52404
(319) 365-5139 (800) 728-5139
2625 W. Airline Hwy., Waterloo, IA 50703
(319) 236-6830 (800) 791-9249
2100 E. Lincoln Way, Ames, IA 50010
(515) 233-9500 (866) 856-2312
Website: www.starequip.com



www.manitou.com



This brochure describes versions and configuration options for Manitou products which may be fitted with different equipment. The equipment described in this brochure may be standard, optional or not available depending on version. Manitou reserves the right to change the specifications shown and described at any time and without prior warning. The manufacturer is not liable for the specifications given. For more information, contact your Manitou dealer. Non-contractual document. Product descriptions may differ from actual products. List of specifications is not comprehensive. The logos and visual identity of the company are the property of Manitou and may not be used without authorisation. All rights reserved. The photos and diagrams contained in this brochure are provided for information only.

MANITOU BF SA - Limited company with board of directors - Share capital: 39,668,399 euros - 857 802 508
RCS Nantes