

RANGE
TRACK LOADER

CTL

Medium Frame



Scan and find out
more information
on manitou.com

 **MANITOU**
HANDLING YOUR WORLD

Operating Capacity
up to **2,750** lbs
(1247 kg)

Engine Power
69 or **72** HP
(51 or 53 kW)

Height to Hinge Pin
129.5 in
(3.28 m)

Hydraulic Flow
up to **33** gpm
(126 l/min)

3 NEW MODELS

(Mid-frame)

Ease of Use

Keyless start, smart throttle and intuitive lighting help inexperienced operators become productive faster.

Robust Design

Hydraulic lines are routed in or under the arms, protecting them at all times.



New, Smaller Underside Access Panels

The steel plates under the machine can be removed and reinstalled easily by one person should you need to access the underside of the powertrain.



IdealTrax™

Patented automatic track tensioning system applies proper tension when the machine is started and relieves tension when the machine is turned off to prolong the life of the tracks.



Increased Comfort

Larger cab and more visibility



Pilot Joysticks

Ergonomics and precision for easy handling



New Intuitive Display

Easy to view and use

Better Visibility

Larger side and rear windows provide wider views of the worksite, while our patented sloped roof and larger front door improve visibility of the attachment and the load.



Strong Cast Steel Links

Our patent-pending vertical lift arm/boom profiles, designed with strong cast steel timing links, provide more reach for dumping into trucks and mixers.

High Breakout Forces

Some of the highest breakout forces in their class let you lift more in each work cycle.

High Auxiliary Power

Meet all attachment performance requirements with some of the highest auxiliary power specifications in the industry.



Your Expectations Our Solutions

Your application is unique. However, our track loaders are designed to meet your requirements by offering you exactly what you expect from your machine. Ease of use, maintenance, reliability, durability and safety.

Our Manitou network will work with you to identify your operational constraints and configure the ideal machine for your application.

Reduce your total cost of ownership (TCO)

Lowering TCO is critical to your business's profitability, which is why Manitou has made it a top priority on our medium frame CTLs.

- **Accessibility**

Cab and floor flip up 62 degrees for access to components underneath and can be lifted up or down, by a single person. Side-by-side engine/hydraulics cooler flips up 28 degrees, providing tool-free access to the top of the engine.

- **Reduced Oil Requirement**

A more efficient cooling system reduces the hydraulic oil requirement, so every oil change costs less.

- **Removable Floor Mat with Drain**

To clean out the foot area, simply remove a plug and steel cover and wash everything down the drain.

- **Greasable Pins**

Easily reached when standing next to the lift arms, simply grease each articulation point as part of your daily maintenance.

- **LED Lights** (optional)

With LED work and road lights, you may never need to change a bulb.



Step Up To Comfort

Enjoy all-day comfort with our more spacious, more ergonomic cab.

- **Larger, One-Piece Cab**

23% bigger than our previous models, this is Manitou's largest CTL cab yet. A larger door enables easier access, bigger windows offer all-round visibility, and the sealed, pressurized fit keeps out dust and dirt.

- **Ergonomic Pilot Joysticks**

Near-effortless to operate, the two joysticks are attached to the seat, following the operator's movements to maximize comfort and control. Both seat and joysticks can be adjusted independently to suit any operator.

- **Larger, More Ergonomic Foot Area**

The removable rubber floor mat allows easy removal of debris. The ergonomic foot rest reduces operator fatigue, and the standard foot throttle enables precise operator control.

- **Lift Arm Cushioning**

The hydraulic cylinders automatically slow down the arms before they hit the stops, preventing jarring impacts and improving operator comfort.

- **Optimized Undercarriage**

Dual flange idlers and triple flange rollers, spaced to minimize vibration, provide a more comfortable ride and reduce bucket spillage.

Robust Performance

At Manitou we take pride in testing our machines to their limits because we know that's what our customers expect.

- **Vertical Arms**

Vertical lift arms allow you to dump material further into large trucks to improve productivity. Provide a more stable and consistent lift path. The arms also increase the visibility without the rear towers.

- **Tried and Tested**

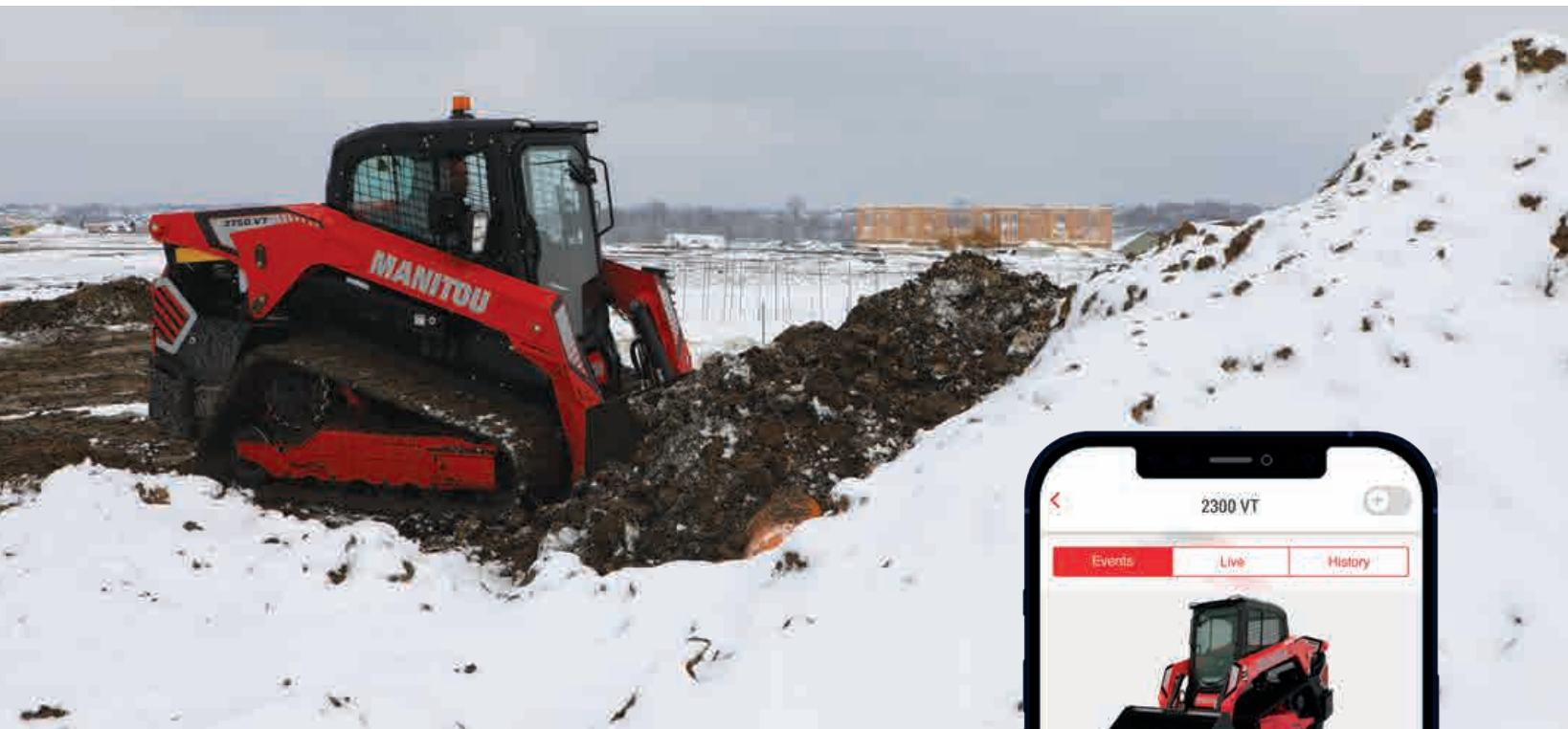
During development, machines are pushed to the limits for thousands of hours to ensure maximum reliability for our customers.

- **Yanmar Engines**

One of the quietest, most reliable engines on the market, we've used the same Yanmar engines as on previous products, simply moving the DPF canister above the flywheel rather than above the engine.

- **Profiled Lift Arms**

Our patent-pending lift arm profiles provide better visibility both above and below the lift arms and reduce the chance of material build-up.



Lifetime Value

Connected Solution.

- **Increase Productivity**

Stay connected to your machine for real time information. Ease your day-to-day workload by tracking and tracing your machine on your PC, tablet or smartphone.

- **Anticipate Maintenance**

Share technical alerts directly with your technician to ensure parts availability and enable earlier, faster interventions.

- **Extended Coverage**

Secure your business for the long run with coverage extended up to 6 years/6,000 hours.

- **Flexible Financing Available**

Hesitating? Talk to your dealer about our customer-centric financing solutions and let's make your project a reality.



Performance and Versatility **to meet all your needs**

Manitou Track Loaders are excellent tool carriers, easily adapting with the right Manitou-approved attachment for the task.

Construction Bucket

Take care of dirt, debris, and fill, with our tough, high capacity buckets.



Pallet Forks Carriage

Available in a full brickguard, rotating, sliding or walk-through carriage design with a full range of fork options.



Brush Root Grapple

Handle awkward materials such as logs, tree stumps, brush, loose hay, or straw.



Hopper Broom

Sweep in forward and reverse for highly efficient material pickup, road maintenance and worksite cleanup.



Blades

From dirt to snow we offer a range of blade options to help you efficiently move material.



Auger

Fast, effective hole-digging for fencing or construction. Available with planetary gear or chain drive with a full range of bits and accessories.



Smooth Operation

Comfort Ride Control (CRC) now standard, the lift arm's movements are cushioned and dampened for better stability, reduced load spillage, and enhanced comfort and safety.

Universal Attachment Plate

Easily connect your existing attachments (for added speed, consider adding the Power-A-Tach™ mounting system.)



	2100 VT	2300 VT	2750 VT
Rated Operating Capacity - 35% Tipping Load (kg)	2,100 lbs. (952)	2,300 lbs. (1043)	2,750 lbs. (1247)
Rated Operating Capacity - 50% Tipping Load (kg)	3,000 lbs. (1360)	3,286 lbs. (1490)	3,929 lbs. (1782)
Rated Operating Capacity w/ Optional Side Weights (kg)	2,200 lbs. (997)	2,400 lbs. (1088)	2,870 lbs. (1301)
Operating Weight (kg)	8,865 lbs. (4021)	9,251 lbs. (4196)	10,051 lbs. (4559)
Height to Hinge Pin – Fully Raised (m)	121" (3.07)	121" (3.07)	129.5" (3.28)
Dimensions without Attachments - L x W x H (m)	108" x 66" x 80.5" (2743 x 1674 x 2045)	110" x 69" x 80.5" (2789 x 1753 x 2045)	119" x 71" x 82" (3023 x 1803 x 2082)
Maximum Travel Speed (kph)	10 mph (15.3)	10 mph (15.3)	8 mph (13.5)
Engine Brand	Yanmar	Yanmar	Yanmar
Gross Power (kW)	69 hp (51.7)	72 hp (53.7)	72 hp (53.7)
Fuel Tank (L)	38 gal (143.8)	38 gal (143.8)	38 gal (143.8)
Standard Flow - Auxiliary Hydraulics (l/min@bar)	23 gpm @ 3475 PSI (86.5 @ 239.5)	23 gpm @ 3475 PSI (86.5 @ 239.5)	26 gpm @ 3475 PSI (98.4 @ 239.5)
High-Flow Auxiliary Hydraulics (l/min@bar)	30 gpm @ 3325 PSI (114 @ 229.25)	30 gpm @ 3325 PSI (114 @ 229.25)	33 gpm @ 3325 PSI (126 @ 229.25)

Choose your ride



Bucket Self-Leveling

Automatically maintain the bucket position when raising the lift arms.



Counterweight

A rear bumper counterweight improves productivity and protects the machine rear from accidental damage. Optional side counterweights can further increase operational capacity.



Pre-Cleaner

Reduce engine wear and TCO in dusty environments by adding an engine pre-cleaner.



FOPS Level 2

For the users that need level 2 FOPS an optional level 2 heavy duty bracket delivers the protection they need. Bracket also protect the front LED work lights.

Tailor your solution to your needs

Discover a wide range of options – to learn more, talk to your Manitou dealer.



LED side lights

Mounted below the lift arm, the lights move with the load, allowing you to see where you are working.



Rear view camera

Improve worksite safety and operational efficiency by adding a rear view camera.



Patented IdealAccess Fold-up Door

Folds up in front of the operator's head, making it easy to operate with the door open or closed, and even with an engaged attachment.



As a professional landscaper I use a wide variety of attachments in a lot of different environments. The equipment we use must support those attachments and have the hydraulic power to operate them effectively.

Your dealer



Scan and find out
more information
on **manitou.com**



This publication describes the versions and configuration possibilities of Manitou products which may differ in equipment. The equipment shown in this brochure may be standard, optional or not available depending on the version. Manitou reserves the right to change the specifications described and shown at any time without notice. The specifications shown are not binding on the manufacturer. For more details, contact your Manitou dealer. Non contractual document. Presentation and visuals of products are not contractual. The logos and visual identity of the company are the property of Manitou and may not be used without permission. All rights reserved. The photos and diagrams contained in this brochure are provided for reference purposes only. Manitou BF SA - Public limited company with a Board of

Directors - Share capital: 39,547,824 euros - 857 802 508 RCS Nantes

Manitou ©Adobe stock